

# BUILDERS SELECT STONE COMPANY

By Appointment

Mike Tilly  
816-309-0676

2021

Chris Tilly  
816-914-6829

## STONE VENEER CATALOG

~NATURAL & HANDCRAFTED~

THIN & FULL BED DEPTH VENEERS

Featuring Our

~PRIVATE LABEL~

Wildhorse & Swirl & Damascus<sup>TM</sup> Marble

INSTALLATION AVAILABLE

Custom Orders Welcome

[BuildersSelectStoneCompany.com](http://BuildersSelectStoneCompany.com)

SERVICING THE DESIGN/BUILD INDUSTRY SINCE 2004

# BUILDERS SELECT STONE COMPANY

SERVICING THE DESIGN/BUILD INDUSTRY SINCE 2004

BUILDERS - ARCHITECTS - DESIGNERS - DEVELOPERS - CONTRACTORS

Who are we? **BUILDERS SELECT STONE COMPANY** is a natural stone thin veneer saw shop.

**Installation available.** Our Stone Masons are **OSHA 10 & OSHA 30 Certified.**

We have a team of dedicated sawing professionals in two locations with over 50 years of collective sawing experience and an executive team with over 100 years combined experience in the masonry/veneer industry.

*Accurately quoted shipments can be the difference between making money, and losing money.*

We collect stone from all over the Western U.S. We are constantly working with our vendors to provide you with the best natural stone material available.

Each stone that we cut is quality controlled and then hand-washed. All of our stone is under 15lbs / square foot required for masonry veneer products.

Price component is one of value, but time is money and there are many ways "cost effective" stone can end up costing you more.

Contractors and masons work hard to stay on schedule and accurately quoted shipments can be the difference between making money, and losing money. Of course it's never fun to end up short on a job because of bad or broken material. Even pallet quality can affect your stone's ability to arrive on time and in one piece. We take a holistic approach to our business, engaging all facets of the customer experience—price, service, dependability, and ingenuity.

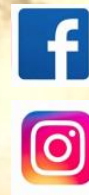
We look forward to the opportunity to not only service your design/build needs, but to build a lasting relationship with you and your company as your "go to" for all of your hardscape needs..

*Thank you, Mike & Chris Tilly*

*All of our product is "Made in the USA"*



ARTISAN™  
HOME TOUR  
GREATER KANSAS CITY



MEMBER



[www.BuildersSelectStoneCompany.com](http://www.BuildersSelectStoneCompany.com)

Mike Tilly (816) 309-0676

[mtilly@buildersselectstoneco.com](mailto:mtilly@buildersselectstoneco.com)

Chris Tilly (816) 914-6829

[ctilly@buildersselectstoneco.com](mailto:ctilly@buildersselectstoneco.com)

# BUILDERS SELECT STONE COMPANY



SERVICING THE DESIGN/BUILD INDUSTRY SINCE 2004

BUILDERS - ARCHITECTS - DESIGNERS - DEVELOPERS - CONTRACTORS

## *Introducing* WILDHORSE SWIRL

Available  
in sizes  
4' x 7'  
&  
4' x 10'



# BUILDERS SELECT STONE COMPANY



SERVICING THE DESIGN/BUILD INDUSTRY SINCE 2004

BUILDERS - ARCHITECTS - DESIGNERS - DEVELOPERS - CONTRACTORS

## *Introducing* DAMASCUS MARBLE

Available  
in sizes  
4' x 7'  
&  
4' x 10'



# INTRODUCTION

## NATURAL STONE THIN VENEER

---

Thin stone veneer flats fabricated by sawing the face of full veneer 1" +/- 1/4" thick

Approximate weight: 12.5lbs sq'

Approximate coverage: 150 – 160 sq' per ton

Sold by sq' used in exterior and interior applications

Thin veneer corners made specifically for corner applications @ 90-degree angle on the sawn back side of the stone 6" – 12" long with a 2" – 4" return.

Conceals actual thickness of the veneer stone.

Maintains consistency with desired pattern throughout corners.

Sold by Linear foot, used for exterior and interior applications.

Modern stone sealers are divided into 3 broad types:

### Topical sealers

Generally made from polyurethanes, acrylics, or natural wax.[2] These sealers may be effective at stopping stains but, being exposed on the surface of the material, they tend to wear out relatively quickly, especially on high-traffic areas of flooring.

This type of sealer will significantly change the look and slip resistance of the surface, especially when it is wet. These sealers are not breathable i.e. do not allow the escape of water vapor and other gases, and are not effective against salt attack, such as efflorescence and spalling.

### Penetrating sealers

The most penetrating sealers use siliconates, fluoropolymers and siloxanes, which repel liquids. These sealers penetrate the surface of the stone enough to anchor the material to the surface. They are generally longer lasting than topical sealers and often do not substantially alter the look of the stone, but still can change the slip characteristics of the surface and do wear relatively quickly. Penetrating sealers often require the use of special cleaners which both clean and top up the repellent ingredient left on the stone surface. These sealers are often breathable to a certain degree, but do not penetrate deeply enough (generally less than 1mm) to be effective against salt attack, such as efflorescence and spalling.

### Impregnating sealers

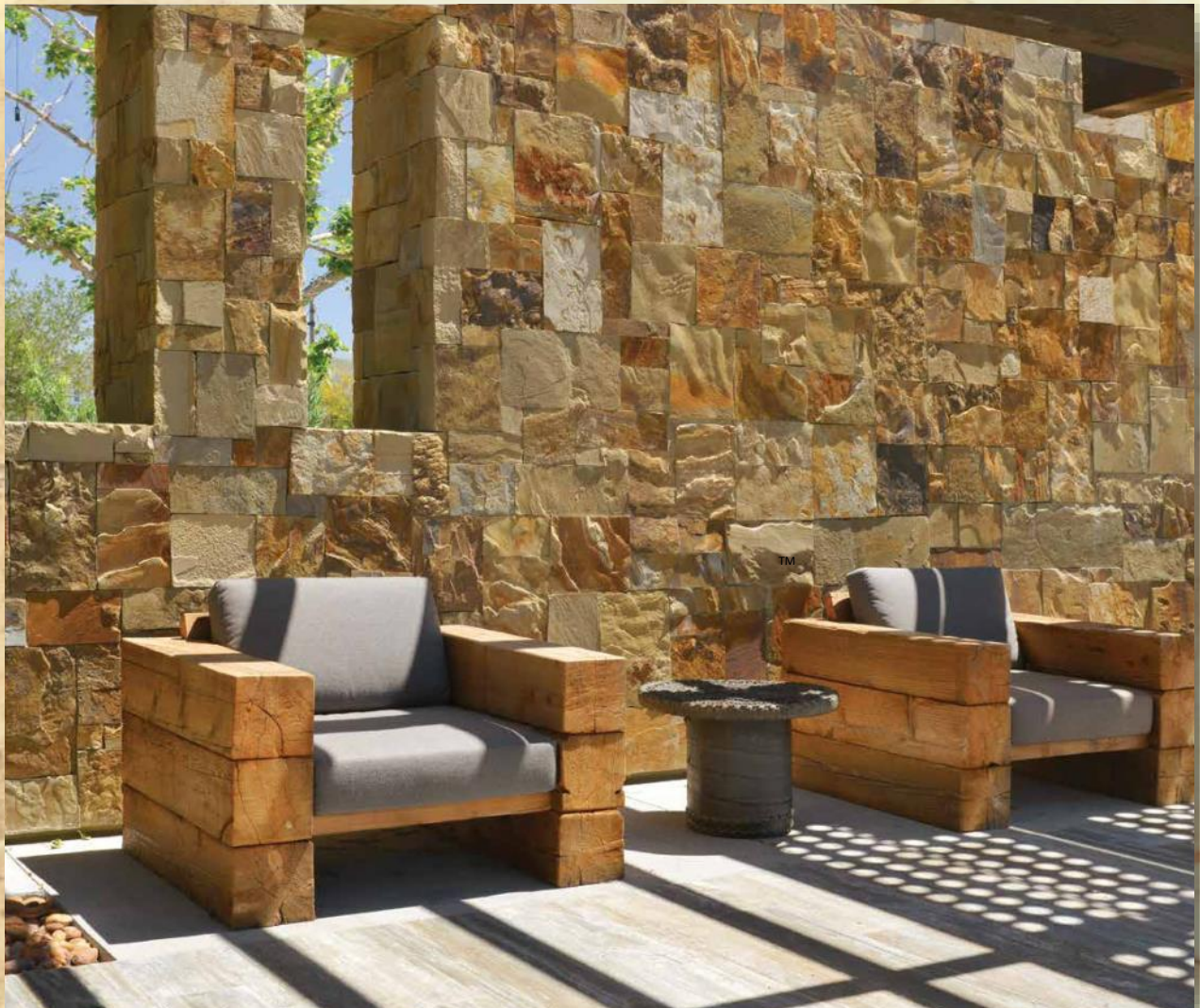
Uses silanes or modified silanes. These are a type of penetrating sealer, which penetrate deeply into the material, impregnating it with molecules which bond to the capillary pores and repels water and / or oils from within the material. Some modified silane sealers impregnate deeply enough to protect against salt attack, such as efflorescence, spalling, picture framing and freeze-thaw spalling. Some silane stone sealers based on nanotechnology claim to be resistant to UV light and higher pH levels found in new masonry and pointing.[3] A good depth of penetration is also essential for protection from weathering and traffic.

### Reference;

<http://pubs.naturalstoneinstitute.org/pub/2db37119-9ce6-b33a-9f1e-4b687a921f80>

 **N**atural **S**tone **V**eneer  
**P** R I V A T E **L** A B E L

*Available in* Thin & Full Bed Depth Veneer



*Pictured LEFLORE COUNTY*

Custom Finishes' & Dimension's

*Available upon request & Pricing upon request*

We offer chopped natural edging, and wall stone, stand up-select,

Call for Pricing & Availability

*P*RIVATE *L*ABEL

*A*vailable in

# Natural Stone Veneer

Thin & Full Bed Depth Veneer



PRIVATE LABEL

Available in

Natural Stone Veneer Thin & Full Bed Depth Veneer



Cavanal



Cottonwood



High Plains



Lona valley



Kodiak



Cottonwood Color



Old Hickory



Miners Blend



Rivers Edge



Panther Mountain



Rocky Ridge



Cedar Ridge



Rocky Road



Rustic Hills



Tundra



*P*RIVATE *L*ABEL

*A*vailable in

# Natural Stone Veneer

Thin & Full Bed Depth Veneer



# NATURAL STONE VENEER

*P*RIVATE *L*ABEL

*Available in*

*Thin & Full Bed Depth  
Veneer*



RUSTIC RANCH



DEEP FOREST



LIBERTY



LEFLORE COUNTY



CHEYENNE



AGAVE/ COSO  
JUNCTION



SHADY LANE /  
LARAMIE VALLEY



LIONSHEAD



JULIAN



SWAN RIVER <sup>TM</sup>



APACHE



PRAIRIE HILLS



COTTONWOOD



ALPEN GLOW



# Natural Stone Veneer

*PRIVATE LABEL*

*Available in Thin & Full Bed Depth Veneer*



SEBASTIAN



WOODSTOCK



BRIDGER



SUMMIT



TIMBERLINE



SOMBRA LEDGE



TIMBERLINE



CANYON CREEK



SUNSET BRONZE



VAIL CREEK

# BUILDERS SELECT STONE COMPANY

## PRIVATE LABEL

Available in Thin & Full Bed Depth Veneer



NATURAL STONE VENEER	HEIGHTS	LENGTHS
Agave	1" - 5"	4" - 24"
Alpenglow	4" - 14"	4" - 24"
Apache	4" - 14"	4" - 24"
Blue Moon		
Bridger	4" - 13"	4" - 24"
Canyon Creek	2" - 5"	6" - 20"
Cheyenne	2" - 12"	6" - 24"
Cottonwood Canyon	4" - 14"	4" - 24"
Deep Forest	4" - 12"	4" - 24"
Julian	4" - 13"	4" - 24"
LeFlore County		
Liberty	4" - 14"	6" - 24"
Lionshead	2" - 10"	6" - 20"
Prairie Hills	4" - 12"	4" - 20"
Rustic Ranch	2" - 10"	6" - 20"
Sebastian	4" - 12"	4" - 24"
Shady Lane	1" - 6"	4" - 24"
Summit	1" - 6"	4" - 24"
Sunset Bronze	2" - 8"	6" - 24"
Swan River	4" - 12"	4" - 20"
Timberline	4" - 12"	4" - 20"
Winecellar		

# WISCONSIN LABEL SAMPLE BOARD FOR PAGES 9—29

AVAILABLE IN THIN & FULL BED DEPTH VENEER



CHARCOAL CAMBRIDGE



STONEGATE



OAKFIELD NIAGRA LEDGE OAKFIELD STONEGATE



COTTAGE MANOR



NIAGRA LEDGE



HONEYBROOKE



OAKFIELD STONEGATE  
TUMBLED



ALPINE



TUMBLED STONEG-



OAK WEBWALL



OAKFIELD ROCKWOOD



ANTIQUE CAMBRIA



ROCKWOOD



OAK CAMBRIDGE



OAK NIAGRA



RUSTIC



PRAIRIE STONEGATE



PRAIRIE LEDGE



# THIN BRICK

Available in Modular, Queen & King,  
does not include all colors (Please contact for details)  
Thickness is 5/8" or 3/4"



AMARO



OLD WILLIAMSBURG



COLONY BAY



MEADOWBROOK



CAPERS ISLAND



ALAMO



GRAND RIVER



SHIAWASSEE



MARSH POINTE



OLD EDISTO



MT. RUSHMORE



COTTONWOOD



SWAN CREEK



ATHENS &  
SILVERADO DETAIL



OLD GUIGNARD



FIRESIDE



MAGNOLIA BAY



ATHENS GRAND &  
CHENIER DETAIL



ATHENS &  
MADRONO DETAIL

# THIN BRICK

Available in Modular, Queen & King,  
does not include all colors (Please contact for details)  
Thickness is 5/8" or 3/4"



COASTAL BLUFF



TOBACCO ROAD



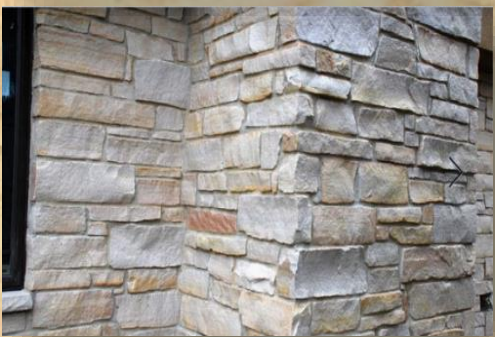
CORDOBA



# AUTUMN GOLD

WISCONSIN LABEL

AVAILABLE IN THIN & FULL BED DEPTH VENEER





# ALPINE BLEND

WISCONSIN LABEL

AVAILABLE IN THIN & FULL BED DEPTH VENEER



WISCONSIN LABEL

AVAILABLE IN THIN & FULL BED DEPTH VENEER

# ANTIQUE CAMBRIAN



# BEAVER DAM CASTLE RIDGE



# FOND DU LAC OAKFIELD & BEAVER DAM



# CAMBRIDGE BLEND

WISCONSIN LABEL  
AVAILABLE IN THIN & FULL BED DEPTH VENEER



# CASTLE RIDGE

WISCONSIN LABEL  
AVAILABLE IN THIN & FULL BED DEPTH VENEER



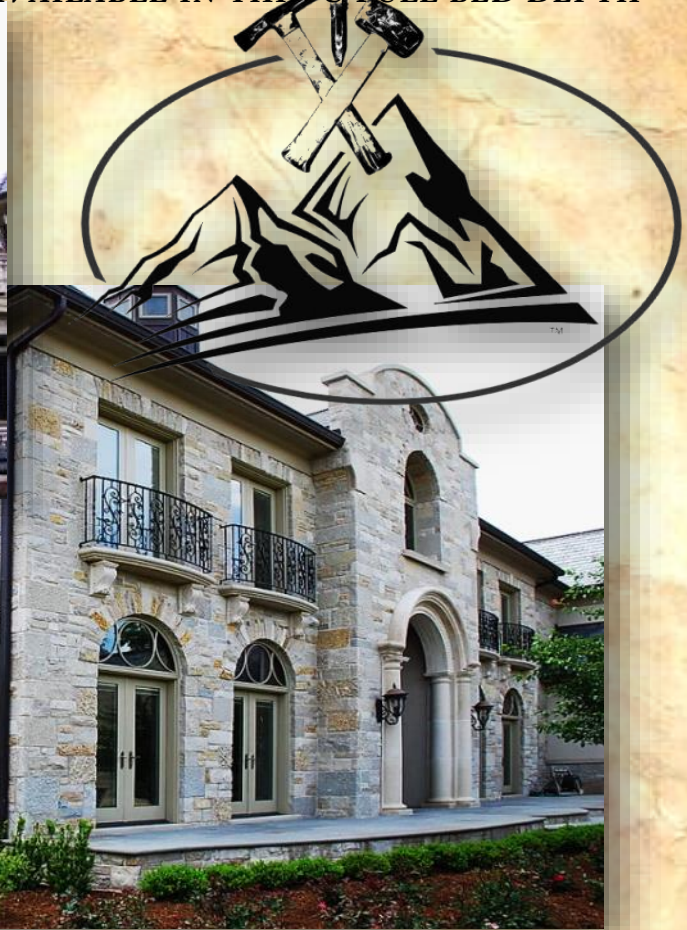
# CHARCOAL CUSTOM BLEND

WISCONSIN LABEL  
*AVAILABLE IN THIN & FULL BED DEPTH VENEER*



# COTTAGE MANOR

WISCONSIN LABEL  
AVAILABLE IN THIN & FULL BED DEPTH



# FOND DU LAC NIAGRA LEDGE

WISCONSIN LABEL  
AVAILABLE IN THIN & FULL BED DEPTH VENEER



# FOND DU LAC ROCKWOOD

WISCONSIN LABEL  
*AVAILABLE IN THIN & FULL BED DEPTH VENEER*





WISCONSIN LABEL

AVAILABLE IN THIN & FULL BED DEPTH VENEER

# CHESTNUT WEBWALL



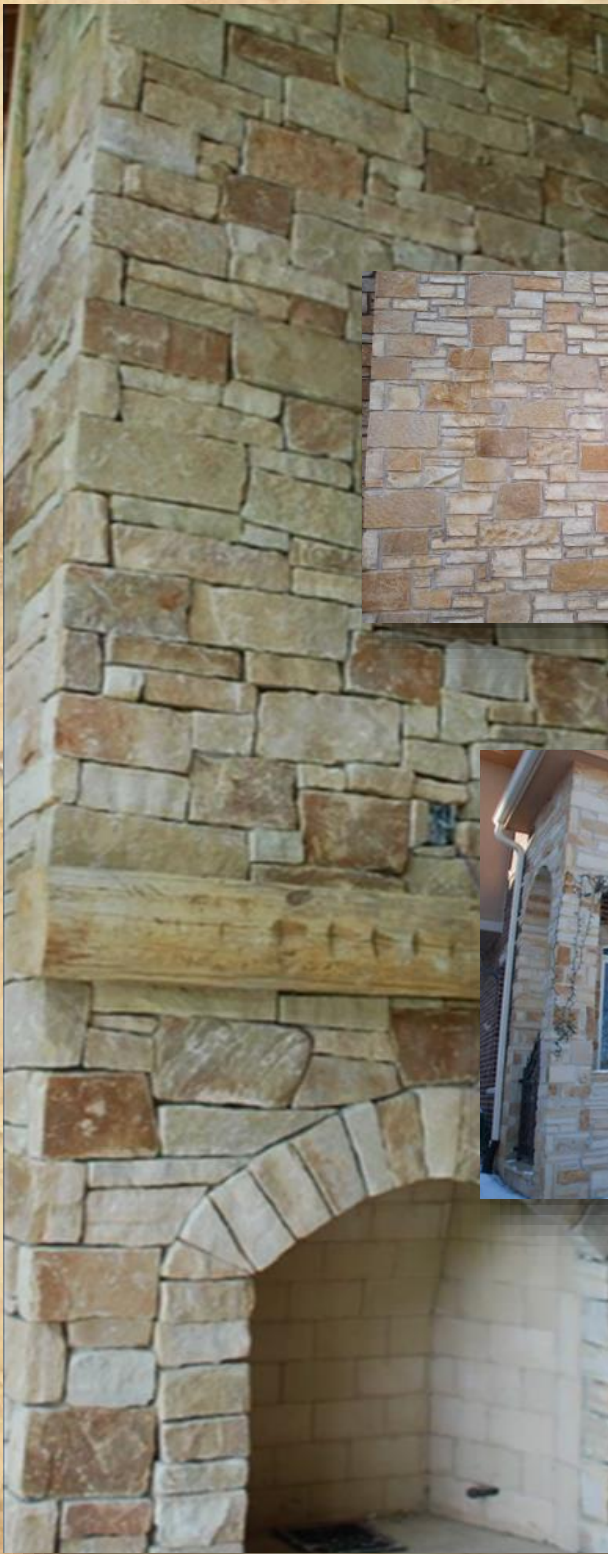
TM

Tumbled Fond Du Lac Dimensional “Niagara Ledge”  
with a little “Prairie Ledge”



# HONEYBROOKE

WISCONSIN LABEL  
AVAILABLE IN THIN & FULL BED DEPTH VENEER



TM



# FOND DU LAC STONEGATE

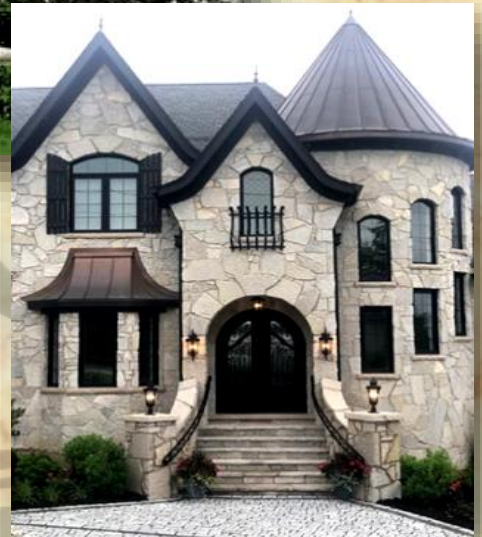
WISCONSIN LABEL  
AVAILABLE IN THIN & FULL BED DEPTH VENEER



WISCONSIN LABEL

AVAILABLE IN THIN & FULL BED DEPTH VENEER

# FOND DU LAC WEBWALL



# NIAGRA LEDGE

WISCONSIN LABEL  
AVAILABLE IN THIN & FULL BED DEPTH VENEER



# OAKFIELD NIAGRA LEDGE

WISCONSIN LABEL

AVAILABLE IN THIN & FULL BED DEPTH VENEER



WISCONSIN LABEL  
AVAILABLE IN THIN & FULL BED DEPTH VENEER

# OAKFIELD STONEGATE



# ROCKFACE SILLS

Sawn to depth and chiseled



# ROCKFACE CAPS





# ROCKWOOD BLEND - SAWN & MACHINE CUT HEIGHT

WISCONSIN LABEL  
AVAILABLE IN THIN & FULL BED DEPTH VENEER



# RUSTIC ANTIQUE

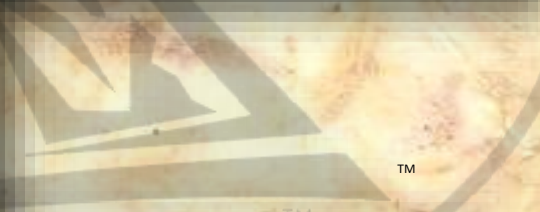
WISCONSIN LABEL

AVAILABLE IN THIN & FULL BED DEPTH VENEER

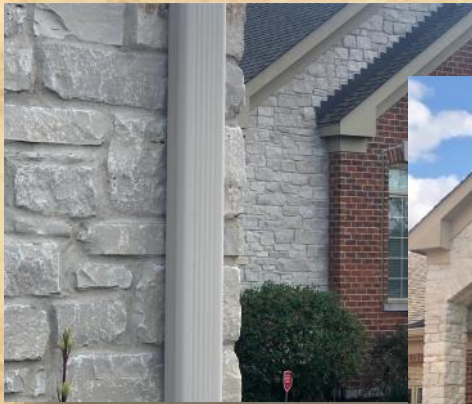


# RUSTIC RUBBLE

WISCONSIN LABEL  
AVAILABLE IN THIN & FULL BED DEPTH VENEER



# TUMBLLED STONEGATE



WISCONSIN LABEL  
*AVAILABLE IN THIN & FULL BED DEPTH VENEER*



# TUMBLLED NIAGRA LEDGE

WISCONSIN LABEL  
*AVAILABLE IN THIN & FULL BED DEPTH VENEER*



# HANDCRAFTED THIN VENEER



**CASTLE STONE™**  
HANDMADE ARCHITECTURAL STONE



## Made in Missouri

  *beautiful across the nation*

### BUILDERS SELECT STONE COMPANY

are proud to announce that we have been selected by

### CASTLE STONE Architectural Stone

out of **St. Louis, Missouri** as

## Exclusive Distributors,

to the Kansas City and surrounding areas, in addition to out of state projects

*Inspired by nature and handcrafted to represent the real stone from which they are cast.*

*Derived from Natural products,* this architectural stone line is manufactured using a blend of Portland cements, iron-oxide dry pigments, specialty light-weight aggregates and other proprietary ingredients that add strength and durability, as well as a natural feel and texture.

*Choose from a variety of stone styles,* including Limestone, Shale, Fieldstone, Weathered Edge, Mountain Ledge, Cut Lime, and Thin Brick—

*Due to the lightweight composition of* our veneer stones, expensive extensions or reinforcements are not required for your home or commercial building, which is yet another benefit of our architectural stone.

*Ideal for commercial and residential* applications and for any interior or exterior application.

*We have a wide selection of colors to* choose from or we have the capability to custom color your stone selection.

*Whether it is for exterior use on your* home or retail shop, patio & grill areas, entrance monuments & columns, or for interior uses, like fireplaces, stairways, wine cellars, bars or kitchen islands, there is a stone veneer designed for your next project.

**Mike Tilly** Phone 816-309-0676  
[mtilly@buildersselectstoneco.com](mailto:mtilly@buildersselectstoneco.com)

**Chris Tilly** Phone 816-914-6829  
[ctilly@buildersselectstoneco.com](mailto:ctilly@buildersselectstoneco.com)

# Made in Missouri



*beautiful across the nation*

## ASHLAR



Siding Facade Featuring  
Eden Ashlar Stone

## EDEN



## EUREKA BROWN



## SUEDE



## BUCKSKIN



# Made in Missouri

 *beautiful across the nation*



# CUT LIME

## Made in Missouri

  *beautiful across the nation*

COCOA BEACH



CAPPUCCINO



CHARDONNAY



Commercial Property Featuring  
Cocoa Beach Cut Lime



CUT LIME  
CAPPUCCINO



OZARK DAWN





# D RYSTACK

CARMEL



ASPEN

SMOKEY MOUNTAIN



HARVEST

MIDNIGHT HAZE



EUREKA BROWN



SUEDE



Made in Missouri  
  beautiful across the nation



Accent siding featuring  
Drystack in a Custom Color

Made in Missouri  
  beautiful across the nation

# F I E L D S T O N E



Residential Features  
Eden Fieldstone

SANDY BROWN



MESQUITE



# L I M E S T O N E



NATURAL



Saettele Jewelers Features Aspen Limestone



SUEDE

SMOKEY MOUNTAIN



CARMEL

BLACK MOUNTAIN



Made in Missouri  
★ beautiful across the nation

# MOUNTAIN LEDGE

Made in Missouri

  *beautiful across the nation*



CARMEL



SMOKEY MOUNTAIN



TM

SUEDE



CANYON GREY



# RIVER ROCK



MOUNTAIN BLEND



Log Cabin Featuring Mountain Blend River Rock



SUEDE

Made in Missouri  
 ★ *beautiful across the nation*

# SHALE



McDonalds Featuring Mossy Brown Shale

## MOSSY BROWN



## CARMEL



## AUTUMN



## SAHARA



## EMERALD GREY



## SMOKEY MOUNTAIN



## SUEDE



## MIDNIGHT HAZE



Made in Missouri  
★ beautiful across the nation

**WEATHERED EDGE**   **Made in Missouri**  
*beautiful across the nation*

**WEATHERED EDGE-  
CANYON GREY**



**WEATHERED EDGE-  
SUEDE**



**WEATHERED EDGE -  
MIDNIGHT**



# Our Services

We offer installation; our stone masons are OSHA 10 / 30 Certified and can work with any stone in the industry.

**BUILDERS SELECT STONE COMPANY** is your one stop shop for your projects all-natural hardscape material's. We remove the middleman so that you will pay less, for more!

We have; minimal overhead, our cellphones, our fuel; we do not set on a fancy retail lot offering you a "snippet" below retail pricing to cover "massive" overhead. Overhead that includes YOU paying for payroll, leasing of property, at least 3 insurances, maintenance of equipment, leasing or purchasing of equipment, delivery trucks, utilities, upkeep, office supplies, and get this!

**YOU pay for THEIR inventory!** These are all dollars that are compounded onto the price tag that you pay in a "retail" service setting.

We provide; Volume purchasing + money saved + convenient shopping (us) + personal convenient inventory + more time on the job + more profitable margins = **HIGHER GROSS REVENUE!!**

Anyone can sell rocks! It takes seasoned and professional knowledge.

We **KNOW** being in the trenches. We **have** been on the job sites and we have worked them. We also know the investment you make to stay on schedule, your time, and with product on-site, readily available, in quality, pricing (for you to retain profit), application, the ability to read blueprints, and determine your necessary requirements for each project.

**Our services include** stocking your inventory with your go-to products (your best sellers) having readily available inventory for your projects save you from delay on your jobsite, assessing your quantity and being prepared, without delay so that **your project runs smoothly, and efficiently, and comes in on time!**

**Schedule permitting,** we can personally coordinate all your loads and personally be on-site, when delivered for quality assurance, placement of product, and to ensure that **you are satisfied with your hardscape materials.**

**You get our complete undivided attention** from the time we meet and thereafter.

We are also here for technical support with 30+ years combined industry experience. We realize your investment, your time, your quality to detail. We have one focus; client satisfaction and our solid commitment to keep your project running on schedule and stocked with the best quarry direct product in the industry, all delivered to you, on time.

So, the next time that you pull up to one of those "open from, to closed" establishments, remember this, you pay handsomely just to walk through the door.

*Our Promise is simple,*

To service each artist, individually with quality, service, and pricing.

*We sincerely look forward to serving you,*

Mike Tilly (816) 309-0676

[mtilly@buildersselectstoneco.com](mailto:mtilly@buildersselectstoneco.com)



**ARTISAN**<sup>™</sup>  
HOME TOUR  
GREATER KANSAS CITY

Chris Tilly (816) 914-6829

[ctilly@buildersselectstoneco.com](mailto:ctilly@buildersselectstoneco.com)



MEMBER



HOME BUILDERS ASSOCIATION  
OF GREATER KANSAS CITY

[www.BuildersSelectStoneCompany.com](http://www.BuildersSelectStoneCompany.com)